

**AOTEAROA
NEW ZEALAND
FESTIVAL^{OF}
THE ARTS**

A

21 February –
20 March 2022

N

Z

SCHOOLS

A

WELCOME

From the Aotearoa New Zealand Festival of the Arts team

Nau mai haere mai! Welcome to the 2022 Schools programme where young people can experience some of Aotearoa's most exciting artmakers across live performance, literature and visual arts.

We celebrate internationally acclaimed visual artist, Lisa Reihana, as our 2022 Artist in Focus. Lisa's digital artworks and installations explore histories and stories of the Pacific and appear in galleries and public spaces across the rohe (region).

Students can discover a range of experiences and creative voices at the Festival. From the thrilling *Destination Mars*, that combines gaming technology and live performance, to theatre highlights *The Haka Party Incident*, *Neke* and *Lysander's Aunty*, a hilarious take on Shakespeare's *A Midsummer Night's Dream* set in the New Zealand bush.

Tungia Tahia is the return of our youth Festival created with and for rangatahi. Hosted in Porirua, the Festival opens with an electrifying performance of storytelling through tikanga Māori, *Te Ahu Taiohi*.

We hope you enjoy the programme and we can't wait to see you at the Festival.



Mere Boynton
Director Ngā Toi Māori



Marnie Karmelita
Creative Director

From the Todd Corporation

The Todd Corporation is a longstanding and enthusiastic supporter of the Aotearoa New Zealand Festival of the Arts.

In 2022 we are delighted to support the Festival's Schools programme, which challenges and inspires young people through outstanding creative experiences helping them better understand their own personal identity and see the world from a new perspective.

It is important to us that by supporting this programme we can encourage young people to engage in diverse and meaningful discussions.

With the Festival's focus on Aotearoa New Zealand talent, this programme is a unique opportunity for students to connect with award-winning local artists right in their own neighbourhood.

We are proud to support this wonderful initiative.



Mike Todd
Deputy Chair,
Todd Corporation

2022 SCHOOLS

Mōu tēnei wāhi, mō tatou
katoa, ko te manaakitanga
te kaupapa!

This is a space for you,
and for us all. Together,
we will uplift each other!

ATTENDING A SCHOOLS EVENT

Our Schools programme is packed full of toi Māori, theatre, music, dance, visual arts, and literature events. Genre tags can quickly help you find what is on offer for your students.

Many events in our programme are free, keep an eye out for the FREE icon in this brochure, see page 20 or visit festival.nz to find out more.

Some events start earlier than the Festival dates, including *Destination Mars* and *in Pursuit of Venus [infected]* – these are great options to consider for Term 4.

Free artist talks alongside events are a wonderful opportunity for senior students to hear directly from the artists. These are listed on event pages or you can visit festival.nz for details.

Event-specific Schools resources will be available from late January 2022 and downloadable at festival.nz/schools.

You can find everything you need to know about our Schools programme on our website festival.nz/schools.

Spread the word among your school whānau!

TICKETING INFORMATION

Tickets for our Schools programme are \$15 per student, \$11 for *Destination Mars* or \$5 for *Te Ahu Taiohi*. Tickets can be booked by emailing ticketing@festival.nz or calling (04) 473 0149.

Please note the best available tickets for school groups at public performances are often C Reserve.

An adult must accompany each student group attending a Schools event. We can issue one teacher/caregiver ticket for every 10 students at the Schools rate. Additional adults must pay the full price (unless it is a Schools-only performance).

Once invoiced, Schools tickets are non-refundable unless the Festival cancels the event due to Covid-19 restrictions.

Age suitability is based on our recommendations only and content warnings are provided where necessary. Aotearoa New Zealand Festival of the Arts takes no responsibility for any offence caused but we do welcome your feedback. Contact us at schools@festival.nz to discuss or share any concerns you have regarding content.

Tickets are issued on a first come-first served basis, and some events will sell out. Visit festival.nz/schools for more ticketing information.



Image: Matt Grace

ACCESSIBILITY INFORMATION

Accessibility is important to us at Aotearoa New Zealand Festival of the Arts.

In this brochure we have also indicated the events which are accessible for Deaf, hard of hearing, blind and low vision audiences. Where applicable, these events have the appropriate symbols next to the event information. Accessible performances may be a different time and date to Schools performances, dates are listed next to the symbols. If you wish to bring a group along to an accessible performance, please contact us at schools@festival.nz.

Our full Access and Inclusion Programme, including information for wheelchair users, can be found at festival.nz/access or contact our Access Programme Producer Nathan Mudge at access@festival.nz, 04 473 0149 ext 6.

Please note that wheelchair seating is limited at all venues.

Contact ticketing@festival.nz for more information about wheelchair access.



NZSL Interpreted Event



Audio Described Event



Touch Tour Event

ARTIST IN FOCUS

LISA REIHANA

MNZM

Lisa Reihana (Ngāpuhi – Ngāti Hine, Ngāi Tū-Te Auru, Ngāi Tūpoto) is a visual artist whose practice includes film, sculpture, costume and body adornment, and photography. She creates works of beauty loaded with meaning, and examines how identity and history are represented, exploring concepts of place and community.

Her art has been exhibited in major museums and galleries worldwide. Alongside contemporary art, Reihana delves into fashion. She is a member of the indigenous Pacific Sisters collective and collaborated with the luxury fashion atelier and shoe designer Christian Louboutin.

Since the 1990s Reihana has significantly influenced the development of contemporary art in Aotearoa New Zealand.

As our 2022 Artist in Focus, Reihana is bringing a free series of her most celebrated pieces alongside new works to the Wellington region over the Festival period. Embrace this opportunity to take a deep dive into the world of one of Aotearoa's artistic treasures.



Experience all of Lisa's Festival events:

In Pursuit of Venus [infected] – page 4

Kura Moana – page 16

Nomads of the Sea – page 17

New Histories – page 17

AOTEAROA NEW ZEALAND FESTIVAL OF THE ARTS AND TE PAPA PRESENT

IN PURSUIT OF VENUS [INFECTED]

Lisa Reihana



In Pursuit of Venus [infected] is Lisa Reihana's retort to the French scenic wallpaper, *Les Sauvages de la mer Pacifique* produced by Joseph Dufour in 1804. Dufour's original wallpaper reflected Europe's fascination with the Pacific voyages undertaken by Captain Cook, de Bougainville and de la Prouse.

200 years later in Aotearoa, Reihana uses 21st century digital technologies to bring the scenic wallpaper to life and challenge its Eurocentric narrative.

Enlivened with the sights and sounds of dance and cultural ceremonies from across the Pacific, Australia and Aotearoa, the vast video panorama defies historical and contemporary stereotypes, notions of beauty, authenticity, history and myth.

He mea ruku tēnei whakaaturanga ki ngā hītorīa, i te tirohanga o ngā iwi taketake, kīhei i kitea ki ngā hītorīa ā te Pākehā. Ko te mutunga iho, he whakaaturanga whakahihiho i te hinengaro. He kaupapa kore utu tēnei, me haere.

WHEN

Fri 15 Oct 2021 –
Sun 27 Mar 2022

WHERE

Toi Art, Te Papa

ARTIST TALK

Sat 26 Feb, 2pm
Te Marae, Te Papa

CURRICULUM LINKS

Māori, History, Pacific
Studies, Design,
Visual Arts, Social
Studies, Geography

SUITABLE FOR

Years 9-13

AD Introduction available during Festival dates, see festival.nz/access



NZSL interpreted artist talk,
Sat 26 Feb, 2pm

VISUAL ARTS

FREE

AUCKLAND THEATRE COMPANY PRESENTS

THE HAKA PARTY INCIDENT

by Katie Wolfe

The Haka Party Incident resurrects the eventful day in 1979 when a group of University of Auckland engineering students rehearsing their annual tradition of a mock haka were challenged by the activist group, He Taua.

To create this production, award-winning filmmaker and theatre director Katie Wolfe (Ngāti Tama, Ngāti Mutunga, Ngāti Toa Rangatira) recorded the recollections of many of the key figures involved in the incident. The result is a riveting theatre-documentary where live drama and kapa haka combine to powerful effect.

This event sent ripples through the nation and changed race relations forever.

I ngā rā ō mua, i te Whare Wānanga o Tāmaki, i ia tau ka tū tētehi whakangahau. Ko te whakangahau nei, he haka, heoi anō, he takahi mana kē te mahi o tēnei haka, he mahi kaikiri. I te tau 1979 ka werongia tērā hunga hakakaikiri, e te rōpū o 'He Taua'. Koinei te kaupapa o tēnei whakaaturanga, he tōwaitanga o aua hītoria.

WHEN

Thu 17 Mar, 11am

DURATION

2 hrs 5 mins,
includes interval

CURRICULUM LINKS

English, History,
Performing Arts (test
curriculum DR Level 1),
Social Studies

WHERE

Opera House

ARTIST TALK

Post-show

SUITABLE FOR

Years 11-13

AUDIENCE CARE

Contains strong
language and
descriptions of
violence



Audio Description, Sun 20 Mar, 4pm



NZSL interpreted performance and
post show talk, Sat 19 Mar, 7:30pm

THEATRE

TRICK OF THE LIGHT THEATRE

THE PARKIN SEASON OF LYSANDER'S AUNTY^{OR}

A MOST RAGEFUL IRREVERENT
COMEDY CONCERNING AN OFF
STAGE CHARACTER FROM
A MIDSUMMER NIGHT'S DREAM

by Ralph McCubbin Howell

directed by Hannah Smith

In Shakespeare's *A Midsummer Night's Dream*, young lovers Lysander and Hermia defy the Duke by eloping to an aunt's house in the woods. But who is this law-snubbing, free-loving aunty? What's she doing in the bush? And what happens when the law comes knocking at her door?

From the makers of *The Bookbinder*, and in the tradition of *Rosencrantz and Guildenstern Are Dead*, comes a riotous reworking of Shakespeare's most popular play that takes a cannon to the canon.

WHEN

Fri 11 Mar, 12pm

DURATION

2 hrs 30 mins,
includes interval

CURRICULUM LINKS

English, Performing Arts



Touch Tour and Audio
Described performance,
Sun 13 Mar, 4pm. See
festival.nz/access

WHERE

Opera House

ARTIST TALK

Post-show

SUITABLE FOR

Years 11-13

AUDIENCE CARE

Contains some
strong language



He whakaaturanga toi whakaari tēnei,
he mea whakakata i te tangata. Ko te
tūāpapa o ngā kōrero o tēnei whakaari,
nā te tohunga pūkōrero nei, nā William
Shakespeare.

Heoi anō, kua tārua rerekētia e Ralph
McCubbin Howell ngā kōrero nei. Nō te
whakaari o *Midsummer Night's Dream* ā
Shakespeare, ko tētehi o ngā kaikiriata
o tēnā whakaari ko Lysander, ā, koina
te ingoa o tēnei whakaari a McCubbin
Howell, ko *Lysander's Aunty*. Piki mai, kia
kitea te kounga o te ao toi whakaari.

THEATRE

COMEDY

AOTEAROA NEW ZEALAND FESTIVAL OF THE ARTS AND TE PAPA PRESENT

DESTINATION MARS

HACKMAN



11 Dec 2021 – 20 Mar 2022

Head into outer space on this interactive experience where gaming wizardry plus captivating live action equals high-stakes adventure! It's 2034, and you are on the planet Mars.

As a control room engineer on an international space station, you must protect the base's support systems and power up the next rocket launch. But when a solar flare plunges your community into danger, have you got what it takes to save the day? From the makers of *Apollo 13: Mission Control*, HACKMAN have gathered a top team of game developers, designers and live performers to create *Destination Mars*.

Seated within a giant dome-like environment, follow crew instructions, attend to your console, and marvel as the action unfolds.

He kēmu tēnei, nā ngā tohunga nei nā Hackman i hanga.

He wā rānei, i hiahia koe ki te haere ki tuarangi? Ki te wāhi e kīa nei e te Pākehā, ko te 'outer space'. Koinei te wā! Haere mai ki Tuarangi, ki runga o Rangawhenua (Mars). He tākaro kēmu te mahi, kāore i rerekē i ngā kēmu ka tākarohia i tō wāea pūkoro. Ehara i te tuarangi tūturu, erangi he whakaaturanga toi, ka noho koe ki roto anō nei kei tuarangi koe.

WHEN

Sat 11 Dec 2021 –
Sun 20 Mar 2022
daily, various times
(excluding Christmas Day)

WHERE

Amokura Gallery,
Te Papa

ARTIST TALK

Sun 12 Dec,
1.30pm, Te Marae,
Te Papa

DURATION

45 mins

CURRICULUM LINKS

Science, Technology,
Performing Arts, Design

SUITABLE FOR

Years 6-13

INTERACTIVE

SCHOOLS PARTNER

THEATRE



NEKE

Scotty Cotter



Neke is an outstanding performance that leaves you with a full and happy heart. It challenges you to voyage, perhaps discover your kaitiaki (spiritual guide) or ask what mana motuhake (self-determination) means to you?

Through physical theatre *Neke* weaves together the diverse representations of Māori society expressed with movement, waiata, characters, and hard out crack ups.

Celebrated Māori theatre, film and television actor, Scotty Cotter (Tainui, Ngāti Kahu, Fiji), and his creative collaborators, Braedyn Togi, Tracey Tawhiao, J. Zealous invite you into the fluid, magnetic and dynamic world of *Neke*.

Nau mai ki te ao kanikani o *Neke*. He whakaaturanga toi whakaari e tiroiro ana ki ngā huarahi maha o tēnā Māori o tēnā Māori, me ngā ara rerekē me whai e tātou e ekea ai te taumata i wawatia ai.

WHEN

Wed 9 Mar, 1pm

DURATION

1 hr 15 mins

CURRICULUM LINKS

Māori, English,
Performing Arts

SUITABLE FOR

Years 7 -13

WHERE

Lower Hutt Little
Theatre

ARTIST TALK

Post-show

AUDIENCE CARE

Contains some
strong language



NZSL interpreted performance,
Wed 9 Mar, 6.30pm



Audio Described performance,
Wed 9 Mar, 1pm

PHYSICAL THEATRE

TE TAIRĀWHITI ARTS FESTIVAL AND AOTEAROA
NEW ZEALAND FESTIVAL OF THE ARTS PRESENT

HIHĪ

A SONG OF PLACE

From the forest glade of Waihirere to the concert hall of Pōneke, the sounds of Te Tairāwhiti come to life in a celebration of te reo Māori and music. *HIHĪ – A Song of Place* showcases some of Aotearoa New Zealand's most remarkable songbirds and kaihaka (performers) alongside members of the New Zealand Symphony Orchestra, performing the songs of Te Tairāwhiti, operatised waiata and popular arias such as 'Nessun Dorma' and 'Habanera' performed in te reo Māori.



Image credit © Zara Staples

WHEN: Fri 4 Mar, 8pm

WHERE: Michael Fowler Centre

DURATION: 1 hr 30 mins, includes interval

ARTIST TALK: Post-show

CURRICULUM LINKS: Māori Performing Arts,
Te Reo Māori, Dance, Music

SUITABLE FOR: Years 11-13

MUSIC

KAPA HAKA

OPERA

ANONYMOUZ PRESENTS

RESAMPLE TATAU

Tali le 'au – lean into the pain



WHEN: Wed 9 Mar, 7:30pm

WHERE: TSB Arena

DURATION: 1 hr 5 mins

ARTIST TALK: Post-show

CURRICULUM LINKS: Music, Pacific Studies

SUITABLE FOR: Years 9-13

Resample Tatau is an ambitious new work from award-winning creative producer and sound artist Anonymouz. Turning his classical hip hop sampling fusion style to the ultra-personal journey of receiving his tatau (a traditional hand tapped Sāmoan tattoo), Anonymouz made audio recordings of his tatau journey to create a seven-movement composition accompanied by live strings and indigenous percussion set to a backdrop of video projection.

MUSIC

FILM

TUNGIA TAHIA FESTIVAL

21 – 26 FEB

Tungia Tahia Festival is our rangatahi's resounding pūtātara throughout the motu.

Through music, movement and toi Māori, collaboration and connection with experienced artists, and an arena-sized platform, we bring to the forefront the voices, perspectives and communities of Aotearoa's young leaders. Stand beside them as they forge a new way.

Tungia te ururua kia tupu, whakaritorito te tupu o te harakeke – clearing space for our young people to flourish and for new ideas to grow.

He whakaaturanga toi whakaari tēnei nā te hunga rangatahi. Ko te tungia, e kōrero ana mō te whakawāteatanga mai o tētehi wāhi, kia whai wāhi anō ai te rangatahi ki te ako, ki te tipu, ki te ora. Ko te tahia, e kōrero ana mō te kotahinga, koina te kaupapa.

THEATRE

MUSIC

DANCE

WRITERS

TOI MĀORI

AOTEAROA NEW ZEALAND FESTIVAL OF THE ARTS, TAKI RUA
PRODUCTIONS AND TE RĀKAU HUA O TE WAO TAPU TRUST PRESENT

TE AHU TAIOHI

He kokonga whare e kitea, he
kokonga ngākau e kore e kitea.

After five weeks of deep creative exploration of self, culture and identity, our rangatira taiohi (young leaders) share with you their ideas, dreams and experiences in a large-scale, electrifying performance of movement and storytelling that will leave you reflective and inspired.

Rangatahi are the present. Join us as they carve out our future.

Te ahunga o tō tātou hunga taiohi, ngā rangatira mō āpōpō, ō rātou hiahia, ō rātou moemoeā.

Koina te kaupapa o te whakaaturanga nei.



WHEN: Weds 23 Feb, 11am

WHERE: Te Rauparaha Arena,
Porirua

DURATION: Approx. 45 mins

ARTIST TALK: Post-show

AUDIENCE CARE: Strobe
lighting, haze and loud sounds

TICKETS: \$5

CURRICULUM LINKS: Māori
Performing Arts, Te Reo Māori,
Dance, Theatre

SUITABLE FOR: Years 7-13

TOI MĀORI

DANCE

MUSIC

THEATRE

Image: Kahui Kaitia, Mairi Brunning Kouka

DEVELOPMENT PROGRAMMES

Tungia Tahia includes programmes and artist talks for a variety of skills training, exploration and creative development for 15-19 year olds. Students must register at festival.nz/schools and get in quick: spaces are limited.

Hei kaupapa whakapakari, hei kaupapa whakapiki i ngā pūkenga o te hunga hiakai. Haere ki festival.nz/schools mō ngā kōrero, kia kakama, ka tere pau ngā tūranga.

BACH BY CANDLELIGHT

Bach by Candlelight features the monumental *Chaconne*, chamber works and solo arias in a timeless expression of Bach's Lutheran faith. The programme is completed by the sacred Cantata 102, a deeply powerful piece calling for the repentance of sinners. The performers are joined by vocal students from the New Zealand School of Music Te Kōkī.

WHEN: Wed 2 Mar, 7.30pm

WHERE: St Mary of the Angels

DURATION: 2 hrs, includes interval

CURRICULUM LINKS: Music

SUITABLE FOR: Years 9-13

CLASSICAL MUSIC



CHAMBER MUSIC SPECTACULAR

Chamber Music Spectacular features two of the most iconic and monumental chamber music works ever written, Mozart's *Gran Partita* for 13 Winds and the String Octet by Romanian composer and violinist George Enescu. Chamber music on this scale is a rarity and a treasure for all those who experience it.

WHEN: Sat 12 Mar, 7.30pm

WHERE: Michael Fowler Centre

DURATION: 1 hr 55 mins, includes interval

ARTIST TALK: Pre-show, 6.30pm

CURRICULUM LINKS: Music

SUITABLE FOR: Years 9-13

CLASSICAL MUSIC



THE KUIA AND THE SPIDER

In this special story time we celebrate Patricia Grace's *The Kuia and the Spider* with new Aotearoa picture books read by acclaimed writers Witi Ihimaera, Ben Brown and Selina Tusitala Marsh.

WHEN:

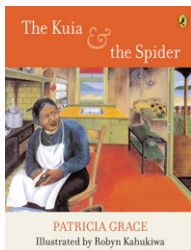
Sun 27 Feb, 11am

WHERE:

Te Marae, Te Papa,
Level 4

SUITABLE FOR:

Ages 3+



WRITERS

FREE

SKINNY DIP

Skinny Dip is a raucous, lively, funny, nostalgic, so-accurate-it's freaky collection of poems about school from some of Aotearoa's best writers.

WHEN:

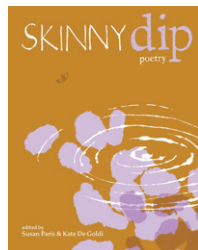
Sun 13 Mar, 11am

WHERE:

Te Marae, Te Papa,
Level 4

SUITABLE FOR:

Ages 8+



WRITERS

FREE

TANIA ROXBOROUGH'S CHARLIE TANGAROA

Budding young writers come to a session of storytelling and writing advice with the 2021 Margaret Mahy Book of the Year winner author Tania Roxborough (Ngāti Porou, Ngāti Mutunga o Wharekauri).

WHEN:

Sat 19 Mar, 11am

WHERE:

Te Marae, Te Papa,
Level 4

SUITABLE FOR:

Ages 8+



WRITERS

FREE

PUKAPUKA TĀWHIRI

Pukapuka Tāwhiri is Aotearoa New Zealand Festival of the Arts' reading programme for schools that asks, why, and how, do some books keep the fires of interest alive? Your school can partake by downloading our visual and written resources for our 2021-2022 books to use in your own classrooms.

Download Pukapuka Tāwhiri resources at festival.nz/schools.

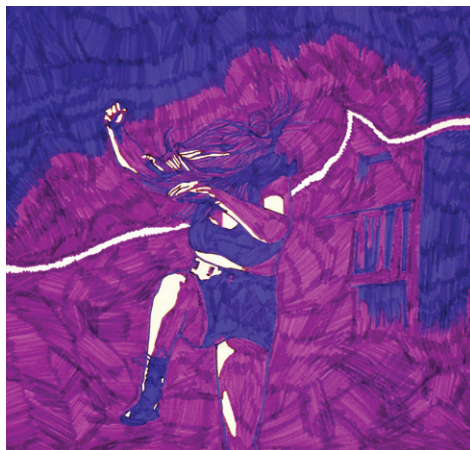
THANKS TO:



WRITERS

FREE

WHOLE NEW WOMAN



WRITERS

THEATRE

A jaw-dropping hybrid of poetry, music and theatre, *Whole New Woman* lands you in the midst of a fractured psyche assembling itself like an army. Freya Daly Sadgrove, author of *Head Girl* (VUP 2020) and ringleader of poetry extravaganza *Show Ponies*, unleashes her hilarious, unsettling, mesmerising performance style in her first full-length show. Freya will be joined by powerhouse drummer Thomas Friggens (Sea Mouse, OdESSA).

WHEN: Thu 17 Mar, 6pm

WHERE: Hannah Playhouse

DURATION: 1 hr

CURRICULUM LINKS: Performing Arts, English

SUITABLE FOR: Years 11-13

AUDIENCE CARE: Contains strong language

A MOVEMENT OF STORY

Pūrākau Reo Rotarota



WRITERS

THEATRE

Join us for an extraordinary evening of true stories told in New Zealand Sign Language that celebrates our third official language. With live interpretation for hearing audience members and audio description available. Featuring Joanne Klaver, Whiti Ronaki, Sonia Pivac, Nirvana Graham and Oliver Ferguson.

Curated and hosted by Jared Flitcroft.

WHEN: Thu 10 Mar, 7pm

WHERE: Circa Theatre

DURATION: 1 hr

SUITABLE FOR: Years 12-13



Suitable for D/deaf audiences

FOR THE PEOPLE WHO WILL HARNESS THE POWER OF LANGUAGE

ENROL IN AN ENGLISH
PROGRAMME RANKED IN
THE TOP 200 WORLDWIDE



THE UNIVERSITY OF
WAIKATO
Te Whare Wānanga o Waikato

THE WETA DIGITAL SEASON OF

KURA MOANA

Lisa Reihana



Experience this gift to Wellington as you wander the waterfront and discover local stories animated in new ways.

"Kura Moana focuses on Te Moananui a-Kiwa, the great ocean, and its role as connector between Aotearoa and across all the Pacific nations. I have created a series of installations that invite families and communities to discover iconic locations on the Wellington waterfront in new ways, to think about some of the local histories and stories that relate to this place. It's about travellers, those who dared to traverse the Pacific, people who seek something new, another life."

— Lisa Reihana, Artist in Focus

Ko *Kura Moana* tēnei, he whakaaturanga toi e pā ana ki Te Moana-nui-a-Kiwa, nā Lisa Reihana o Te Tai Tokerau. He whakaaturanga toi ataata, toi whakaari anō hoki, he auaha, he ahurei, he rerekē, otirā he kounga, he ātaahua.

WHEN: Fri 25 Feb – Sun 20 Mar

WHERE: Wellington Waterfront

CURRICULUM LINKS: Māori, Pacific Studies, History, Design, Visual Arts

SUITABLE FOR: Years 4-13

A map locating *Kura Moana* installations will be available on festival.nz.



VISUAL ARTS

FREE

NOMADS OF THE SEA

Lisa Reihana

Te Wai Ngunguru - Nomads of the Sea is an immersive 3D installation where Lisa Reihana weaves historical fact with speculative fiction to explore social tensions in 1800s New Zealand.

Te Wai Ngunguru explores the lust for muskets, the cultural circumstances where women could find agency at this time, and the contrast between European law and Māori morality.

VISUAL ARTS

FREE

He whakaaturanga toi ataata tēnei e kīa nei, ko *Nomads of the Sea*, nā Lisa Reihana. He raweketanga hītori tēnei, e kitea ai ētehi o ngā āhuatanga o te mana o te wahine i roto i tō tātou hītoria.

WHEN: Sun 27 Feb- Sun 3 July

WHERE: Pātaka Art + Museum, Porirua

CURRICULUM LINKS: Māori, History, Design, Visual Arts, Film

SUITABLE FOR: Years 9-13

Image: Lisa Reihana

NEW HISTORIES:

Lisa Reihana and William Dunning

New Histories is an exhibition of moving image, drawing and sculpture. Artists Lisa Reihana and William Dunning explore power dynamics between Māori and settler cultures and provide alternate settings for exchange.

WHEN: From Fri 22 Oct, 2021

WHERE: Toi Art, Te Papa

CURRICULUM LINKS: Māori, History, Design, Visual Arts

AGE SUITABILITY: Years 9-13

VISUAL ARTS

FREE

Image: Lisa Reihana, *Native Portraits n.19897, 1998*

MOVEMENT OF THE HUMAN

BELLE

A PERFORMANCE OF AIR

Above and all around you a performance of air is created by internationally renowned aerialists, a live musician, and dance artists. *BELLE* takes its name from the French word libellule (dragonfly) which is symbolic for transformation in some cultures. In *BELLE*, transformation is created with sculptural light portals where the performers disappear and reappear as if by magic.

Malia Johnston collaborates with fellow artists Rowan Pierce, Jenny Ritchie, Eden Mulholland and an exceptional all female cast.

Haere mai rā ki tēnei whakaaturanga whakangahau. He waiata ka rangona, he kanikani ka kitea, otirā he whakangahau nā ngā tohunga tāwēwē runga taura, ko te tītāritari (acrobatics). Kua mōhiotia whānuitia ēnei tohunga tītāritari i te kounga o ā rātou mahi.

WHEN: Tue 1 – Fri 4 Mar, 7pm

WHERE: TSB Arena

DURATION: 1 hr 10 mins

ARTIST TALK: post-show, Wed 2 Mar

CURRICULUM LINKS: Performing Arts, Dance, Physics

SUITABLE FOR: Years 11-13

AUDIENCE CARE: Audience will be standing throughout the event and guided through the space / contains strobe lighting

DANCE

CIRCUS

IMMERSIVE

CHAMBER MUSIC NEW ZEALAND PRESENTS

THE SEASONS

Christchurch Symphony Orchestra and Jolt

Sound takes on new meaning when classical remix and dance collide. Take a journey with the world's most streamed classical composer Max Richter, as you venture through his reimagined landscape of Vivaldi's pictorial masterpiece *The Four Seasons*. Led by acclaimed violinist Martin Riseley, musicians from the Christchurch Symphony Orchestra melodically intertwine with dancers of all abilities from inclusive dance company, Jolt.



Image: Darryl Woods

This energetic and evocative performance is a joyous and affirming celebration of movement, music and life.

WHEN: Tue 15 Mar, 7pm

WHERE: Michael Fowler Centre

DURATION: 1 hr

CURRICULUM LINKS: Music, Dance

AGE SUITABILITY: Years 7-13

AD Audio described performance

MUSIC

DANCE

THE ROYAL NEW ZEALAND BALLET IN ASSOCIATION WITH
AOTEAROA NEW ZEALAND FESTIVAL OF THE ARTS PRESENTS

VENUS RISING

Three extraordinary works, by three inspiring and internationally celebrated choreographers, capture the spirit and power of Venus Rising.

Aurum by The Royal New Zealand Ballet alumna Alice Topp celebrates the beauty of the broken. The Royal New Zealand Ballet's Choreographer in Residence, Sarah Foster-Sproull's *The Autumn Ball* dances through the circle of life. Twyla Tharp brings this showcase of dance to a climax with the New Zealand premiere of her *Waterbaby Bagatelles*.



DANCE

WHEN: Thu 24 – Sat 26 Feb, 7.30pm

Sat 26 Feb, 1.30pm

WHERE: Opera House

TICKETS: \$15 – book through the RNZB on 04 831 1056 or email education@rnzb.org.nz

DURATION: 2 hrs 10 mins, including intervals

ARTIST TALK: Pre-show, Fri 25 Feb, 6.30pm

CURRICULUM LINKS: Dance

SUITABLE FOR: Years 9-13

The RNZB's dance educators are running tailored dance workshops for schools.

WHEN: 14 - 25 February

TICKETS: \$5 per student – book through education@rnzb.org.nz

Image: Ross Brown and Mark Gee

FREE EVENT INDEX

The 2022 Aotearoa New Zealand Festival of the Arts has heaps on for FREE! See at a glance all the FREE events on offer for students. Visit festival.nz for more information.

EVENT	WHEN	WHERE	CURRICULUM LINKS
Rita Angus: New Zealand Modernist	Fri 17 Dec 2021 – Mon 25 Apr 2022	Toi Art, Te Papa	Visual Art
Jellicoe & Bledisloe: Hamilton in the 90s – David Cook	Wed 23 Feb – Sun 15 May	The New Zealand Portrait Gallery Te Pūkenga Whakaata	Visual Art, History
Photobook	Fri 4 – Sun 6 Mar	Te Papa and The New Zealand Portrait Gallery	Visual Art
# Paper Pals Aotearoa	From Wed 9 Feb	Te Papa	Visual Art
Meltdown: Visualising Climate Change	Sat 26 Feb – Tue 8 May	Whirinaki Whare Taonga, Upper Hutt	Visual Art
Listening Stones Jumping Rocks	Sat 20 Nov 2021 – Sun 27 Mar 2022	Adam Art Gallery	Visual Art
Feathermania: Fashion To Die For Te mate huruhuru: He kahu matemate	Mon 5 Jul 2021 – Apr 2022	Toi Art, Te Papa	Visual Art
Silk Web	Mon 15 Nov 2021 – Sun 3 Apr 2022	The Dowse, Lower Hutt	Visual Art
Eden Hore High Fashion / High Country	Sat 4 Dec 2021 – Sun 20 Mar 2022	The Dowse, Lower Hutt	Visual Art
TAME ITI 50th Anniversary of Ngā Tamatoa	More details to come soon – see festival.nz .	More details to come soon – see festival.nz	Visual Art, History, Māori
Through The Eye Of Te Whanganui-a-tara	Mon 21 Feb – Sun 20 Mar	Details to be launched in January 2022 on festival.nz	Visual Art, Science
Kura Moana	Fri 25 Feb – Sun 20 Mar	Wellington Waterfront	Māori, Pacific Studies, History, Design, Visual Arts
in Pursuit of Venus [Infected]	Fri 15 Oct 2021 – Sun 27 Mar 2022	Toi Art, Te Papa	Māori, History, Design, Visual Arts, Film
New Histories	From 22 Oct 2021	Toi Art, Te Papa	Māori, History, Design, Visual Arts
Nomads of the Sea	Sun 27 Feb – Sun 3 July	Pātaka Art + Museum	Māori, History, Design, Visual Arts, Film
The Kuia and the Spider	Sun 27 Feb, 11am	Te Marae, Te Papa	Reading
Skinny Dip	Sun 13 Mar, 11am	Te Marae, Te Papa	Reading
Tania Roxborough's Charlie Tangaroa	Sat 19 Mar, 11am	Te Marae, Te Papa	Reading, Writing

MORE INFORMATION

Visit our website festival.nz/schools for more information on:

- Our venues
- How to book
- Accessibility
- Planning your visit
- Resources

GET CONNECTED

Sign up to receive the latest news from Aotearoa New Zealand Festival of the Arts and our Schools programme at festival.nz/schools.

For more info or to receive a hard copy of the Schools programme contact our team:

Email: schools@festival.nz

Phone: 04 473 0149

CORE PARTNER

**Absolutely
Positively
Wellington**

Me Heke Ki Pōneke

CORE FUNDER

creative *nz*
ARTS COUNCIL OF NEW ZEALAND - Te Kaitiaki

DESTINATION MARS SCHOOLS PROGRAMME PARTNER

 **Wonder Project**

LEADER PARTNERS

weta
DIGITAL

mediaworks.

MOREFM
MODERN'S BEST MUSIC MIX

SCHOOLS PARTNER


TODD
CORPORATION

MAJOR GRANTS

NZCT
NEW ZEALAND COUNCIL OF THEATRE

**Absolutely Positively
Wellington City Council**
Me Heke Ki Pōneke

 **Manatū
Taonga** Ministry
of Culture
& Heritage


**NEW ZEALAND
MAJOR EVENTS**

**Wellington
Community Trust**


Te Puni Kōkiri
MINISTRY OF MAORI DEVELOPMENT

UNIVERSITY PARTNER

 **THE UNIVERSITY OF
WAIKATO**
Te Wānanga o Waikato

STEM teaching made simple



**WHERE SCIENCE
TECHNOLOGY
ENGINEERING AND
MATHS COME ALIVE.**

**Spark wonder in your students
with hands-on learning
experiences available at Level 3
and 4 of the curriculum.**

We supply everything you need, free – student modules, detailed lesson plans, challenge kit, and an industry professional to help you build confidence and teach STEM the easy way.

**Wonder Project programmes for 2022
are live now for teacher registrations.**



Rocket Challenge
Term 2



Power Challenge
Term 3



Plant Challenge
Term 4



POWERED BY

CallaghanInnovation
New Zealand's Innovation Agency

Be part of the wonder today at
wonderproject.nz

  @WonderProjectNZ

